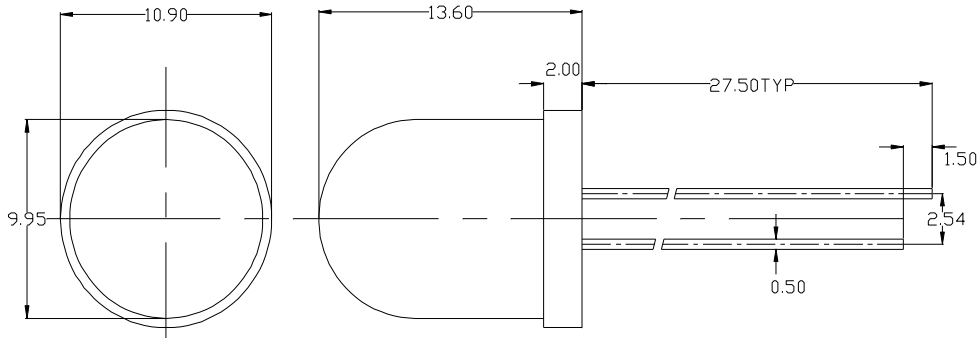


Typical Electrical-Optical Characteristics at Ta = 25°C, IF=20mA

Part No.	Size	Viewing Angle(deg)	Package Type	Emitting Color	Dominant Wavelength (nm)	Luminous Intensity (mcd)		Forward Voltage(V)	
						Min.	Typ.	Typ.	Max.
RC-L1003RCA0-XX	10mm	40	Round	Red	618-630	2000	6000	2.0	2.4
RC-L1003YCA0-XX	10mm	40	Round	Yellow	580-593	2500	6000	2.0	2.4
RC-L1004GCA0-XX	10mm	40	Round	Green	510-530	400	2000	3.2	3.6
RC-L1004BCA0-XX	10mm	40	Round	Blue	450-480	2000	5000	3.2	3.6
RC-L1004WCA0-XX	10mm	40	Round	White		8000	25000	3.2	3.6

Outline Dimension(mm)



Optical-Electrical Characteristics

